

# Chapman House

With stunning views across the foothills of the Waitakere Ranges all with way to Sky City, this newly renovated 5 bedroom house has all the comforts of home. The house is light and airy with plenty of living space and generous sized bedrooms.

The luxury master bedroom suite has a full sized walk in wardrobe and large en-suite bathroom.

Being on the edge of the Waitakere Ranges it's a great spring board for the west coast beaches, walks in the ranges, and is handy to west Auckland's wineries and wedding venues.

Chapman House is

5 minutes drive from Swanson train station (trains to the CBD, Eden Park and the rest of Auckland).

15 minutes from Kumeu

15 minutes to Bethells Beach

30 minutes to the CBD

25 minutes to the Zoo

35 minutes to Auckland Airport

Please note - no pets permitted, no parties or other events permitted

## Contact Information:

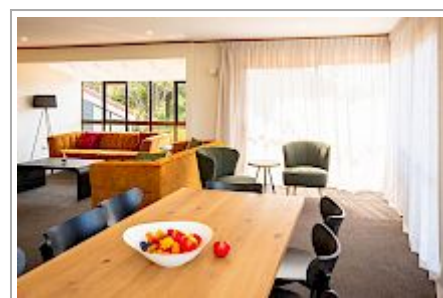
**Address:** 1010 Scenic Drive, North, Auckland, New Zealand

**Contact:** Christine Carpenter

**Location:** Swanson, West Auckland, New Zealand

**Directions:** From the North: Exit the north-west motorway at Lincoln Road. Turn right at Universal Drive, and follow until it becomes Swanson Road. Continue on Swanson Road until it becomes Scenic Drive. Chapman House is 5 minutes drive past Swanson.

**GPS:** -36.8783157, 174.5432996



# Chapman House Map

