

Haven Bed & Breakfast

We are located in peaceful Beachhaven offering friendly B&B homestay style accommodation at affordable prices.

All rooms offer garden views and tea and coffee making facilities and have a shared guest bathroom and separate toilet. Hairdryer and bathrobes are provided.

Just 40 minutes from the airport and 15 minutes from the City Centre, we provide a relaxed atmosphere to recover from that long journey, or just as a base to take in some of the great sights and activities our region has to offer.

We are on a main public transport route to the City with a bus stop just 5 minutes walk away.

We are ideally situated as a gateway to the picturesque north and its many attractions.

There are many cafes, restaurants and bars within 5-10 minutes drive and local takeaways within 5-10 minutes walk.

Contact Information:

Phone: 09 940 4699

Mobile: 021 173 4589

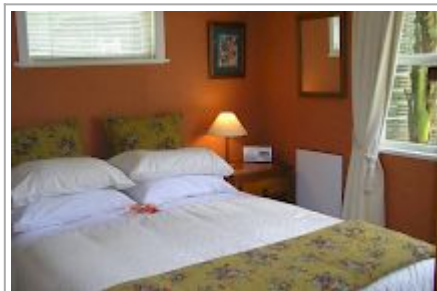
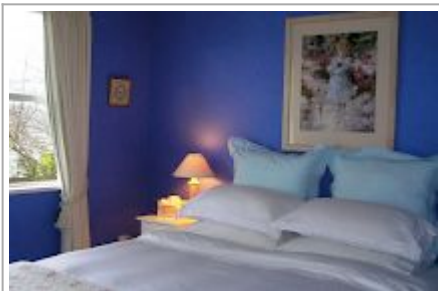
Address: 20 Japonica Drive,
Beachhaven, Auckland

Contact: Gill Ashurst

Location: 40 minutes from the airport and 15 minutes from the City

Directions: From airport head for the City and over the Harbour Bridge. Take exit 421 for Onewa Road. Follow the road for approx 7km turning right at the roundabout into Tramway Road, then first right and first left into Japonica

GPS: -36.7953839, 174.6927183



Haven Bed & Breakfast Map

