

Arias Farm Bed & Breakfast

Rotorua Accommodation that's right near town, yet has lots of space and animals to play with! Our accommodation is situated on a cute 3 acre town farm right in the city suburbs of Rotorua.

Our lodge Bed & Breakfast has 3 separate rooms, suitable for singles, couples, or a small family looking for peace and quiet, and a breakfast laid out at your leisure. Baby cot and high chair is available.

Our stand-alone Tiny Home has two bedrooms sleeping up to 6 persons, full kitchen, bathroom, washing machine, Wifi, outside enclosed deck, shared spa, and complimentary continental breakfast stored in the fridge.

Peace and quiet close to Rotorua township
No sulphur smell or traffic noise
Animals to feed, learn about, & pet
Child friendly with play areas & sandpit
Lots of room for extra visitors and games
Hot spa to relax in after a day sightseeing
Free Internet access 24/7, TV in room
Lots of safe, offstreet parking, well away from road

Enjoy the open space, clean air, birdsong, quiet bush surroundings and natural springs that are Aria's Farm. Be welcomed by your friendly and experienced Kiwi host family at the best of Rotorua's Accommodation, situated right within the town boundaries.

We also have larger self-contained units for bigger groups.

ASK ABOUT OUR GREAT MID-WINTER, MID-WEEK DISCOUNTS!

Contact Information:

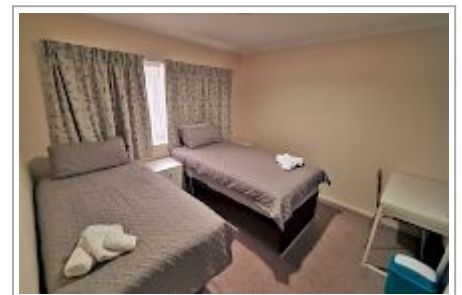
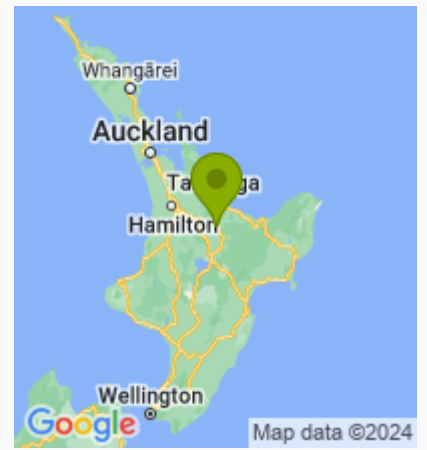
Mobile: 021753691
Address: 396 Clayton Rd,
Pukehangi, Rotorua

Contact: Kerris Browne

Location: 8km from City Centre -
396 Clayton Rd, Pukehangi,
Rotorua 3015

Directions: We are located at the very top end of Clayton Rd, on the Northern side of town, between the Skyline gondolas and Paradise Valley lion park, at the base of Mt Ngongotaha, just 1km from the Speedway/Stock car track.

GPS: -38.133283, 176.1952732



Arias Farm Bed & Breakfast Map

