

Timbertrail Farmstay

Guests are welcome to enjoy viewing any activities which are happening during their visit but it depends on what's happening on the day - so it is a bit of a lucky dip really. There could be shearing, lambing and calving, feeding out or maybe simple day to day activities. There are usually pigs/piglets to feed. Glenn would be happy to do a dog run on a few sheep if people wanted to see how the dogs work. Roxy the horse is there for patting and feeding.

Many people enjoy a walk around the farm. There are numerous walks possible from a 2km stroll up to the airstrip to view the mountains and extensive farm land on a clear day. For those looking for more of a challenge there is a 5km walk through the middle of the farm up to the trig. Take a pack with a few treats to enjoy when you reach the top.

Then of course Timber Trail Farmstay is an ideal base to enjoy cycling the Timber Trail.

After your days activities you may like to relax in the outdoor shower or bath and could be treated to the Kereru flying amongst the trees or the calling of the morepork in the evening. Or just enjoy the quietness of rural living.

Contact Information:

Phone: 0273481233

Mobile: 0273481233

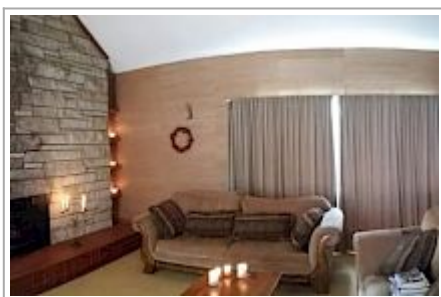
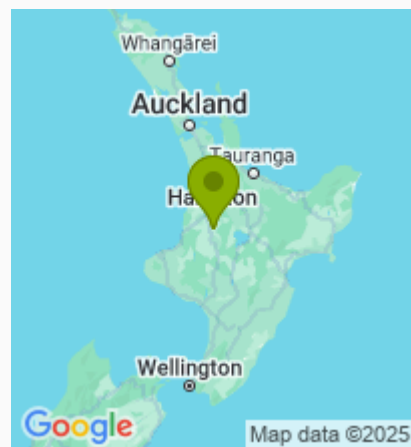
Address: 426 Waihuka Road RD
Ongarue 3997

Contact: Carol

Location: 426 Waihuka Road RD
Ongarue

Directions: We are located 18km from the Ongarue - end of the Timber Trail. 26km to Piropiro Flats - (middle) and 45km to Pureora Village - start of the Timber Trail. Nearest shops - Taumarunui 38km or TeKuiti 52km

GPS: -38.6652223, 175.2686497



Timbertrail Farmstay Map

