

Eliza's Manor Boutique Hotel

Eliza's Manor Boutique Hotel combines an historic ambience with eight comfortable guest rooms, all with modern ensuite bathrooms. Enjoy an individually cooked breakfast, relax in our Guest Lounge or outside in our private courtyard and have a drink from our fully licensed bar. Free wireless internet access is available and we have plenty of free off street parking.

Built in 1861, Eliza's historic B&B was for much of its life a family home, before becoming a Boutique Hotel in 1981. Now, you can enjoy the classic charm of this historic building the leadlight windows, wood panelling and the magnificent main staircase.

Following the earthquakes in Christchurch in 2010-11, Eliza's has undergone a major refurbishment and is again in pristine condition. Eliza's fully meets the latest Structural, Fire Safety and Electrical Code requirements.

Eliza's has a 4 Star Plus rating from Qualmark, New Zealand tourism's official mark of quality and provides excellent value for money while providing a very high standard of Christchurch accommodation.

Eliza's also has function facilities and in-house catering to provide a range of services for Christchurch business meetings, conferences and for those special private celebrations.

For the comfort of all our guests Eliza's Manor on Bealey is a totally smoke free property.

Contact Information:

Phone: 033668584

Freephone: 0800 366859

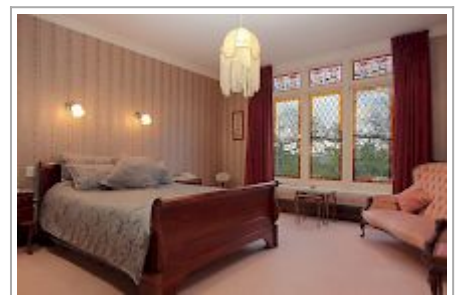
Address: 82 Bealey Avenue

Contact: Casey Edwards

Location: 1,5km from Cathedral Square in centre of Christchurch City

Directions: Driving from the airport follow the main road, Memorial Drive, towards the city. Turn left at the traffic lights at Hagley Park following the park to Bealey Avenue and at Durham Street make a U-turn and enter us at #82.

GPS: -43.5210509,
172.63273879999997



Eliza's Manor Boutique Hotel Map

