

Kimwellross Central Apartment

"Charming 2 bedroom ground floor apartment with open-plan living. Sliding doors lead out to the patio and spa. Secured gated access, with private entry to the property, no need to go through the main complex. Park on the street or beside the unit.

Includes:

- 1 queen bed, 2 single beds
- Furniture, sheets, towels, kitchen utensils.
- Power and internet.

All set for a comfy stay"

"The unit's in a sweet spot - city central boundary. You've got the iconic Margaret Mahy playground a stroll away ♠ playground. The brand-new Christchurch Stadium's just 10 mins walk away, and shops and restaurants are 15 mins away. Plus, just down the road is the the awesome Christchurch Recreation and Sports Centre - pools, hydro slide, gym, the works! ? Beat Street Café is also just a skip away □."

Contact Information:

Phone: 039605553

Mobile: 02040260220

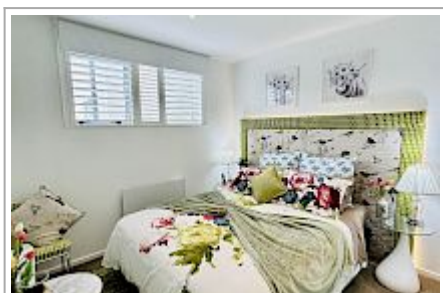
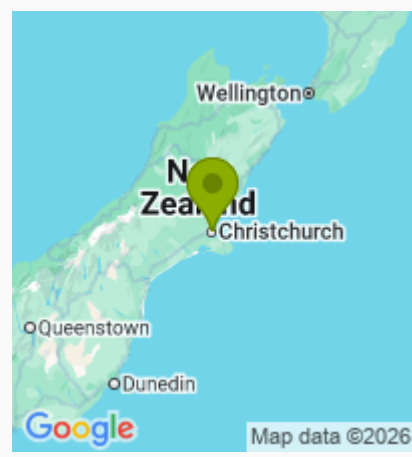
Address: 316 Barbadoes Street,
Christchurch Central City,
Christchurch

Contact: Kim and Roel

Location: Actual address is 288
Armagh St ChCh, Cr of Barbadoes
Armagh St

Directions: The unit is in the city
central boundary. Close by
Margaret Mahy playground, the
brand-new ChCh Stadium's just
10mins walk, & shops &
restaurants are 15mins away. ChCh
Recreation & Sports Centre, hydro-
slide. Beat Street Café just across
the road.

GPS: -43.5288885, 172.6459573



Kimwellross Central Apartment Map

