

Karamana Homestead

Quiet corners for reading or delighting in conversations. Waking to morning songbirds outside your window. Indulging in breakfasts made with a passion for the sharing of food. But most of all...engaging in your time together leaving the noise behind

We welcome you to a place where relaxation isn't something you seek, it's something that's inevitable.

The Stables Cottage is suitable for all ages. The B&B rooms are suitable for adults only.

Contact Information:

Phone: 078667138

Mobile: 0224620923

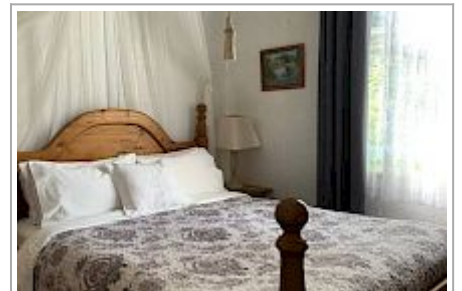
Address: 84 Whangapoua Road,
Coromandel Town

Contact: Ann-Marie Creech

Location: 800 meters from
Coromandel Town

Directions: From Thames (1 hour), drive north to Coromandel Town and take a right turn on State Highway 25 approximately 200 meters before the town center. We are the corner-lot on the right, at the first curve in the road.

GPS: -36.7602049,
175.50866059999998



Karamana Homestead Map

