

The Green House Bed and Breakfast

The upper floor of the Green House is a dedicated guest area with 2 extremely comfortable, modern en-suite rooms and a well-equipped, airy lounge all with vaulted ceilings offering beautiful views of the bay and the ranges.

The Ranges Room has its own private tree level deck. It and the room look over the garden to the Coromandel Ranges. The Seascape room is spacious with ample room for luggage storage. Be prepared to be taken aback by the reflections of the sunset in the waters of the harbour.

All beds (either Queen or King) have quality mattresses and linen, plus electric blankets. All rooms have heaters and fans and we supply robes, slippers, hair dryer, toiletries etc. All guests staying at the Green House Bed & Breakfast have access to the guest lounge where the facilities include: computer and free Wi-Fi access; refrigerator, chromecast and freeview TV, videos, DVDs, games and cards along with complimentary tea/coffee.

Your Continental Breakfast includes a choice of cereals, home-made bread, preserves, yogurt and a fresh fruit salad with many of the fruits from the garden; a cold meat and cheese platter plus a selection of fruit juices, teas and coffee. We also offer eggs if you still have room. Special dietary needs can be catered for on prior notification.

Feel free to enjoy the garden, borrow a bike, play croquet and ask us to help you with your plans.

Contact Information:

Phone: 078667303

Mobile: 0273418024

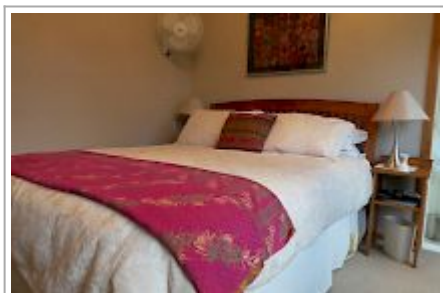
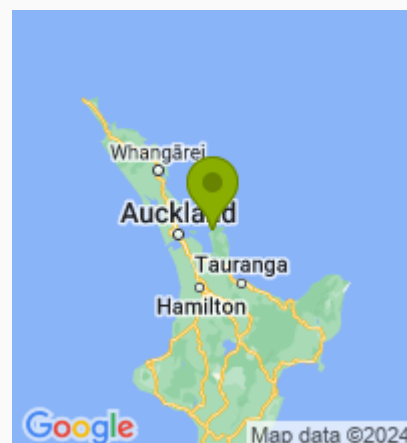
Address: 505 Tiki Road

Contact: Tish or Andrew

Location: 33 miles, one hour north of Thames - lovely windy coastal road

Directions: Coming from Thames on Highway 25, we are the first house on the right past the 50 km sign as you approach Coromandel Town. From Whitianga, turn left at T-junction after driving over the ranges. 2nd house on the left.

GPS: -36.7631885,
175.50118240000006



The Green House Bed and Breakfast Map

