

# 415 Marine Parade

Located at the edge of the Napier CBD, you're perfectly situated to explore city on foot or to head further afield to the many attractions and destinations Hawke's Bay has to offer. If you want to make your Hawke's Bay experience extra special, we look forward to meeting you. 415 Marine Parade offers among other things, full cooked breakfasts, evening drinks with canapes, and a turndown service, with chocolates and port. All hosted in extremely comfortable surroundings. All suites have sea views, with four suites opening onto balconies.

## Contact Information:

**Phone:** +64 274869859

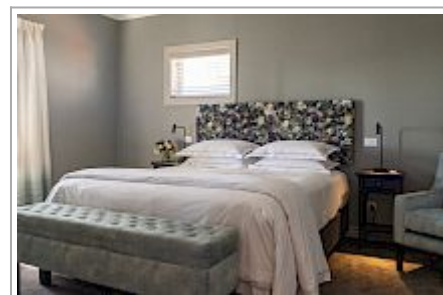
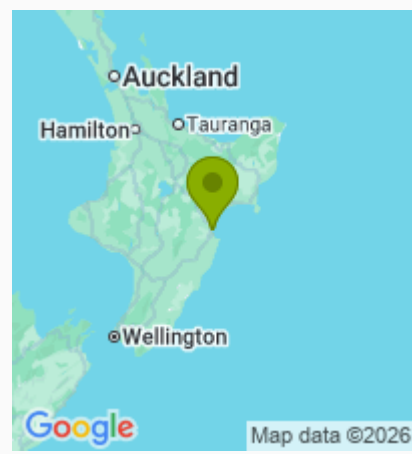
**Address:** 415 Marine Parade,  
Napier South, Napier, New Zealand

**Contact:** Esther Seymour

**Location:** 800 metres from the centre of Napier City Centre, on the beach front

**Directions:** We are approx. 800 meters to Napier city centre, close to restaurants and cafes, and the wonderful art deco buildings of central Napier.

**GPS:** -39.4985403, 176.9184092



# 415 Marine Parade Map

