

# Ormond Street Motel Woodville

We offer you affordable accommodation at Ormond Street Motel. We are located down a lovely quiet street with a fantastic park just across the road. Woodville is situated at the bottom of the Hawke's Bay and the top of the Wairarapa - Central to the Manawatu.

Our lovely little thriving township which is a 2 minute walk, offers you lovely Cafes, amazing 2nd Hand Shops, a locally owned Iconic Four Square which has a great selection on Wines and Beers, the NZ famous Yummy Mummy Cheesecakes and FishSpot for the freshest fish-n-chips around!

Come walk the Manawatu Gorge Track. Walk through native bush, enjoy scenic views and experience native wildlife only a short distance from Woodville. We welcome everybody here and will do our very best to assist you with your needs.

## Contact Information:

**Phone:** 06 376 5638

**Mobile:** 022 300 5299

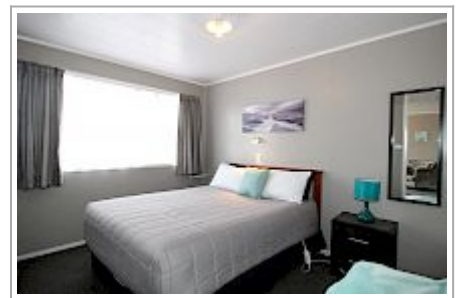
**Address:** 45 Ormond Street,  
Woodville, New Zealand

**Contact:** Winnie

**Location:** 45 Ormond Street  
Woodville 4920

**Directions:** Woodville is a small town in the southern North Island of New Zealand, 75 km north of Masterton and 25 km east of Palmerston North, at the intersection of State Highways 2 and 3.

**GPS:** -40.3398702, 175.8669756



Ormond Street Motel Woodville Map

