

Hazelwood B&B

Mapua offers a choice of interesting shops, restaurants, pubs and local breweries and health and beauty care. Stroll down to the wharf or discover some great coastal walks and cycling tracks.

Historical Nelson city with its music and arts festivals is a short drive away. Golf courses, local breweries and vineyards are all within easy access. For swimming, kayaking and tramping you will discover all these and more in the stunning Abel Tasman National Park just 30 mins drive away . Travel a little further to discover the Nelson lakes, Farewell Spit or, if you're feeling a little more active, Rainbow ski field or Mount Arthur. As you journey around the area you will discover many interesting art and craft studios and a wealth of both Maori and European history.

We pride ourselves in offering simple high quality hospitality.

A shared entrance but then you will find our guest accommodation as a quiet and private area with a choice of two spacious and comfortable en-suite, king rooms having views out to our orchard garden or Mount Arthur and the Kahurangi ranges .

Features:

- Delicious continental style breakfast
- Complimentary tea, coffee, juices available throughout your stay
- Home baking and preserves
- Free wireless and internet access
- Laundry facilities (charge applies)
- TV and DVD entertainment in both rooms
- Bathrobes and Beach towels
- NZ made toiletries
- Electric blankets
- Off street parking
- Non-smoking
- Check-in from 3:00pm

Contact Information:

Phone: 03 540 2155

Mobile: 021 288 9448

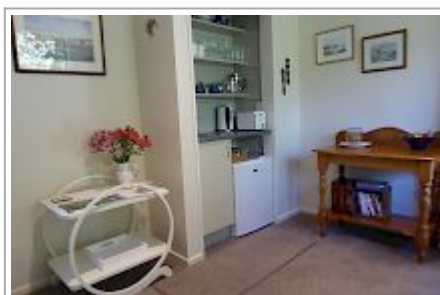
Address: 6 Jessie Street, Mapua, Tasman,

Contact: Sally Williams

Location: Situated 35km north west of Nelson off State Highway 60

Directions: From Nelson, take Highway 6 and then Highway 60 to Collingwood. Turn right at Mapua/Ruby Bay turn off. Turn right into Higgs Rd. Take 2nd left into Jessie Street. Hazelwood is on the right hand side.

GPS: -41.2547623, 173.0929552



Hazelwood B&B Map

