

The Boot (at Jester House)

.For something different come and experience the peaceful, serene country surroundings of our unique and romantic bed and breakfast in Tasman, Nelson. Our private boutique bed and breakfast accommodation is a two storey cottage in the shape of a giant boot, furnished especially for two. Located in the heart of the beautiful Tasman region, centrally between the Abel Tasman National Park, Kahurangi National Park and Nelson, a perfect position for exploring the highlights of Tasman Bay.

The Boot is nestled within a grove of hazelnut trees. Outside, the courtyard, surrounded by a fragrant garden, offers sun loungers for relaxing on hot afternoons and an alfresco dining area for spending lazy evenings beside the outdoor fireplace. Inside luxuriate on the comfy couch in front of the open fire, or enjoy an early night in the comfort of the upstairs bedroom.

Our quiet, relaxed Boot adopts sustainable practices without deterring from the luxury experience that we want all our guests to enjoy. Guests are welcome to wander the paths of our 2.4 hectare garden during their stay.

The Boot is adjacent to Jester House café with its tame eels. Tasman's first country garden café it offers breakfast, lunch, morning and afternoon tea, friendly service and an unforgettable experience.

Contact Information:

Phone: 35266742

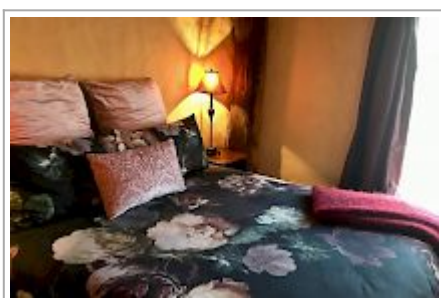
Address: 320 Aporo Road, RD 1

Contact: Judy van den Yssel

Location: 35 minutes west of Nelson heading for the Able Tasman Park

Directions: 35 minutes from Nelson in the direction of Able Tasman Park. 5 minutes from Mapua. Turn off the Coastal Highway to the Ruby Coast, (direction Tasman / Mapua) and we are 1km on the left

GPS: -41.1957862, 173.0578231



The Boot (at Jester House) Map

