

GEMS Seaside Lodge

GEMS Seaside Lodge is a beautifully situated holiday home in Ahipara, Northland. Your choices include two idyllic living arrangements...

The Haven: This spacious upstairs apartment has two double bedrooms (with en suites) and the most stunning panoramic sea views.

The Treasure Trove Studio: Ground floor with sea views and access to the Beach via a tidal inlet.

These apartments have fully equipped, self contained kitchens, Sky TV, BBQs plus access to a washing machine and clothes dryer (8am to 8pm).

Relax and be refreshed in the comfort of your delightful apartment. Alternatively, launch yourself into the varied activities that Ahipara and the Northland surrounds have to offer. The friendly subtropical climate is conducive to the following pursuits:

Swimming

Surfing

Boogie boarding

Leisurely beach walks

Sand duning

Horse riding

Quad biking

4 wheel driving

Golf (course 5 minutes away)

Bird watching

Fishing (chartered boats, surfcasting)

Kauri forests

Vineyards

* We are also a pick up point for tours to Cape Reinga.

Ahipara Dining

Bidz Takeaway for the best fresh fish & chips in town - 1.0km away

North Drift Cafe (open daily 8am-8pm) - 1.1km away

Bayview Restaurant and Bar (includes StoneGrill dining) - 2.9km away

Ahipara Superette store (for groceries) - 1km away

Ahipara liquor store - 1km away

Kaitaia Pak n Save Supermarket - 16km away

Contact Information:

Mobile: +64278209403

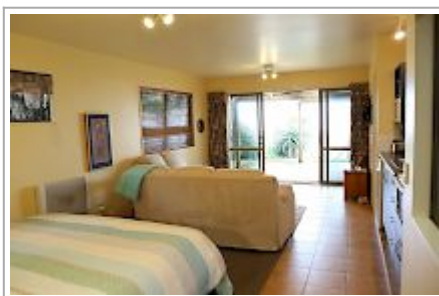
Address: 14 Kotare Street, Ahipara

Contact: Ray Sotutu

Location: 14 Kotare Street, Ahipara. 14km west of Kaitaia.

Directions: When coming from Kaitaia, go past the Ahipara Primary School (on the left), follow the curve to the right. Kotare is the fourth street on the left after the school. GEMS Seaside Lodge is right at the end of the cul de sac.

GPS: -35.1634793,
173.15432369999996



GEMS Seaside Lodge Map

