

Top Storey Bed & Breakfast

Top Storey Bed & Breakfast is a quiet, peaceful, family friendly, spacious, character filled colonial style home with 2 bedroom Top Storey apartment and Garden Unit set in lovely garden surroundings. As close to sea and city as you can get, walk to the water in 2mins, A short drive takes you to spectacular Whangarei Head's area with golf, coastal walks, beautiful ocean beaches and spectacular Mt Manaia waiting for you to climb! Day trips easily made from us to Bay of Islands, West Coast, Northland's coastal areas and attractions.

The Top Storey Apartment with a large lounge area with pool table. Self contained. Double bedroom with queen size bed, double bedroom with two single beds, also a pull out sofa bed. Can sleep 6. Has toilet/ vanity, own bathroom. Air conditioning. Water views from the bay windows and often glorious sunsets. Good for families and couples travelling together. Own access by stairs.

The Garden unit Open plan, self contained unit. Sleeps 4 with a Queen bed and two King Single beds. Elderly friendly with flat access opening to the garden and sunny conservatory. Good for your morning cuppa or evening glass of wine. The Garden Unit only is Pet Friendly and suitable for children as garden fenced.

Both have a well equipped kitchenette with self catering facilities, Free Wireless internet TV, DVD, DVD library Radio/CD. Children are welcome Porta Cot, high chair available. Good breakfast Continental/Cooked

Come and enjoy our hospitality

Contact Information:

Phone: 09 436 2220

Mobile: 021 463330

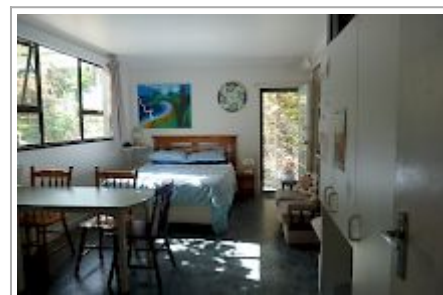
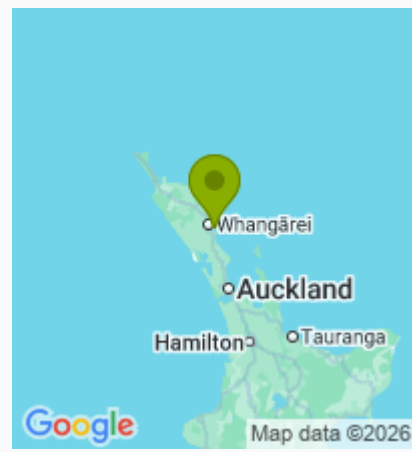
Address: 73 Scott Road,
Tamaterau, Parua Bay, Whangarei

Contact: Jane Kippenberger

Location: 2.5hrs from Auckland
Airport 15mins east of Whangarei
on harbourside

Directions: From Whangarei follow signs to Whangarei Heads/Airport at Onerahi pass Supermarket turn left into Whangarei Heads Rd. Go 9ks Turn right at top of first hill into Scott Rd. Top Storey down hill No 73

GPS: -35.7827048,
174.41926349999994



Top Storey Bed & Breakfast Map

