

Trout n Trail B&B

Trout n Trail B&B is only five minute walk from the centre of Ranfurly township. It is situated in a lovey garden setting looking out to the Mountain rangers, which is a great way to relax and enjoy the surrounding farm land and animals.

Trout n Trail is situated in the hart of the Central Otago Rail Trail which makes it a great place to stay.

There is plenty of activities to keep you busy while you are staying with us. Naseby is a great place for walks through the forest mountain biking the international curling rink. The Maniototo also has great fishing with the Taieri river running through the hart of it, which has fantastic fly fishing.

Contact Information:

Phone: 0273332672

Mobile: 0273332672

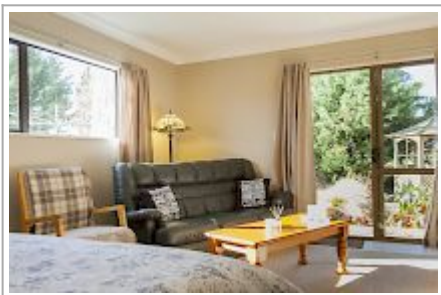
Address: 35 Caulfeild street

Contact: Brooke Watson

Location: Ranfurly Central Otago

Directions: Trout n Trail Is only five minute walk from centre of Ranfurly.

GPS: -45.1254698, 170.1021664



Trout n Trail B&B Map

