

# Breakaway At York Bay

Come and be our guests and enjoy this lovely, spacious two-bedroom accommodation, nestled into the bush in York Bay, Wellington. Wonderful harbour views looking across to the city can be seen from your own deck and both rooms. Relax and listen to the sounds of the abundant birdlife, enjoy great sunsets and the beautiful city lights at night.

The studio has a king bed, two couches table & chairs for 4 people, large TV, DVD players. The second bedroom has a queen bed, small table and 2 chairs, Couch, TV & built-in DVD player. There is free WiFi a range of books and movies for you to enjoy. Continental breakfast is optional for an extra cost and we offer an airport pickup at an extra charge. When booking for two people needing to use both rooms there is an extra one off fee of \$50.00 for the use of the second bedroom.

We only take one booking at a time, so the separate bathroom is only shared by members of your party. The accommodation is on the lower level of our home so there may be some footfall noise from above and separate access is available via steep steps on the side of the house. There is plenty of free parking on the road.

In summer you can share the use of our solar heated swimming pool or it's a short stroll down the hill to swim in the sea. For the adventurous there are bush walking tracks within the bay, or you can walk for longer distances to the cafes in Days Bay. There are bikes to hire in Eastbourne and there are many rides of varying distances all bea

## Contact Information:

**Phone:** +64 4 568 3622

**Mobile:** +64 275482323

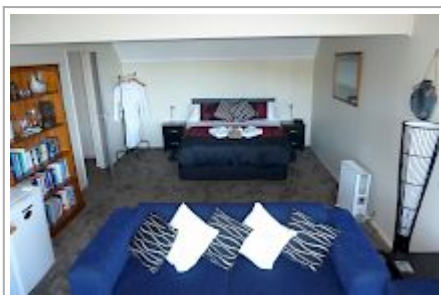
**Address:** 3 Latham Rd York Bay  
Lower Hutt

**Contact:** Cathy Gilmour

**Location:** Drive times: Wellington  
25 mins, Petone 10 mins,  
Eastbourne 7 mins

**Directions:** Turn left into York Bay from Marine Drive (which is the road to Eastbourne). Go left at the T intersection and right at the next T intersection. A very sharp bend marks the start of Latham Rd and number 3 is 100 metres up the road with a wooden seat

**GPS:** -41.2630574,  
174.91306269999995



Breakaway At York Bay Map

